



Emmet County Recycling Mixed Containers

EMPTY &
RECYCLE

Aluminum cans, foil, & foil trays

- Please rinse to remove food

Tin/steel cans, metal caps & lids

- Please rinse
- NO aerosol cans or propane tanks

Plastic bottles, jugs, jars, tubs, trays & cups

- Please empty of liquids and rinse off food
 - Plastic caps and lids, on their containers, are now recyclable
- Plastic bags go in the "Paper, Boxes & Bags"
- **NO STYROFOAM**

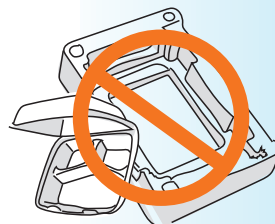
Glass bottles & jars metal or glass items

- Clear, green, brown, and blue glass are okay.
- Please remove lids or stoppers. Metal and plastic lids can be included for recycling. Discard cork stoppers.
- Please rinse containers.
- NO broken glass, light bulbs, or window glass
- NO glass dishes

Milk cartons, juice boxes & paper cups

- Refrigerated milk and juice cartons, ice cream cartons too.
- Aseptic boxes/cartons: juice boxes, broth/soup cartons, & shelf-stable milk boxes, for example.
- NO mylar pouches (like Capri Sun pouches)
- Please empty of liquids

PUT PLASTIC BAGS IN
THE PAPER STREAM



NO Styrofoam items



NO non-container plastic,
metal or glass items

Questions?

231-348-0640 or visit EmmetRecycling.org